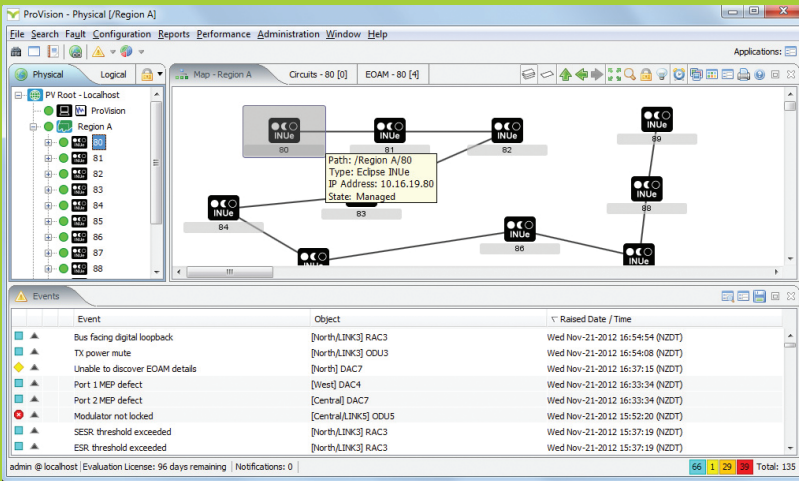




# PROVISION® ELEMENT MANAGEMENT SYSTEM



## SUPPORT FOR ALL NETWORK EQUIPMENT TYPES

ProVision provides the following Aviat Networks and third-party device support:

- Eclipse and Eclipse Packet Node Platform
- Aviat WTM series of all-indoor and all-outdoor microwave systems
- All Aviat current, legacy, and future devices
- Generic Device Support fault management for a wide range of third-party SNMP devices; 50+ third-party device packages currently available
- Application Integration including craft tools, PCR collector, PCR viewer, MSUU.

## NETWORK INTELLIGENCE

The ProVision Element Management System delivers superior wireless networking intelligence by offering a unique feature set, based on industry standards, designed to support the increasing demands of growing networks. By leveraging Aviat Networks' innovative microwave systems, ProVision maximizes network availability and throughput while significantly reducing OPEX.

Designed with the user in mind, ProVision is intuitive and adaptable for a wide range of activities that users can customize to match their network requirements. In addition, ProVision automates time consuming and error prone processes, such as the provisioning of end-to-end TDM and Ethernet services, bulk upgrading network firmware, and diagnosing network clock distribution problems.

With the ability to provide network management across Aviat's complete product portfolio, including many key partner products, ProVision delivers an efficient, seamless end-to-end network management solution for TDM, Ethernet, and hybrid microwave networks.

**SMOOTH TRANSITION TO ALL-IP**

Transitioning networks from legacy TDM to all-IP takes time and money, as well as risk of network interruptions. ProVision smooths the process by harmonizing microwave, TDM and Ethernet network operations with common concepts and features, a shared operator experience, and automation of complex processes.

Advanced Carrier Ethernet capabilities spanning Synchronization, Ethernet OAM, ERPS, EVC/VLAN and protection/diversity technologies include discovery of network and service resources, end-to-end visualizations, and automated provisioning. Collectively they remove significant complexity, deliver faster rollout with fewer mistakes, assure service availability and quality, providing confidence in transitioning from TDM, hybrid, to All-IP networks.

**DEPLOYMENT PROFICIENCY THROUGH AUTOMATION**

Deploy new element management with:

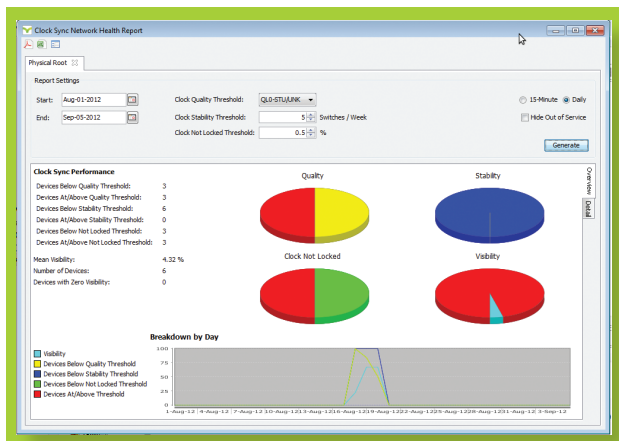
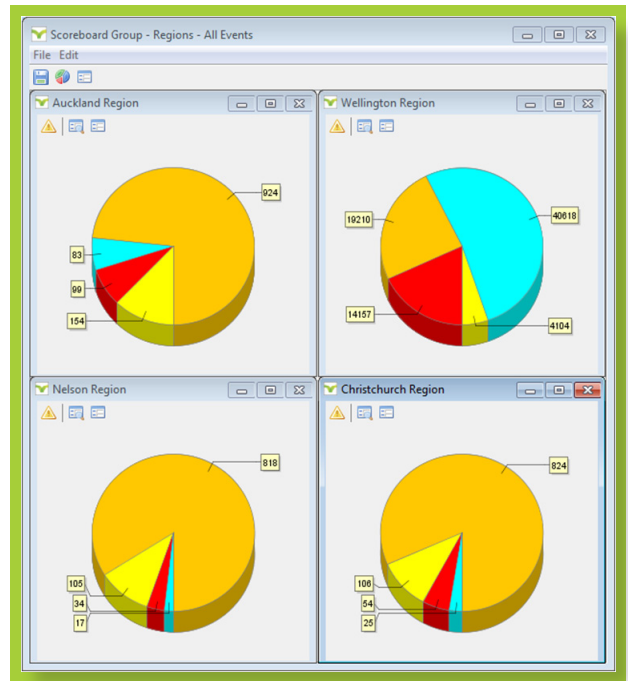
- Quick installation on Windows and Solaris and fast upgrade installations with automated database migration
- Automated discovery of network devices, inventory, configurations and end-to-end TDM and Ethernet services

**SMART FAULT MANAGEMENT**

ProVision’s active health monitoring of critical microwave, TDM and Ethernet resources and service performance is smarter than traditional fault monitoring, delivering:

- Network Health Reports detect faults before an outage occurs by identifying performance degradation, for RF, Ethernet, Clock Sync

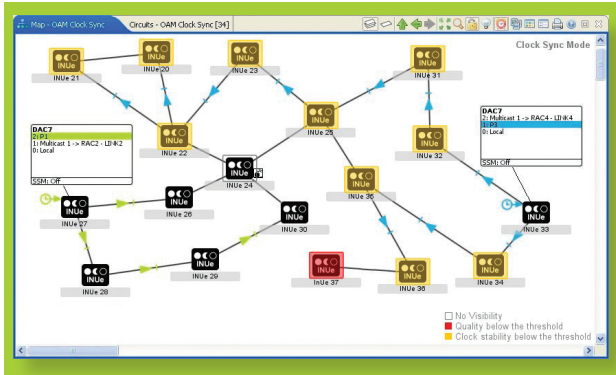
- Instant alerts of degraded performance via email, SMS and messaging, with deep-dive navigation to quickly investigate and resolve events
- Simple performance threshold management
- Flexible applications for networks, device types and more, via logical containers
- Advanced end-to-end diagnostics, including Ethernet service OAM (ITU-T Y.1731 and IEEE 802.1ag) and TDM circuit PRBS testing
- Ethernet clock distribution and clock synchronization related faults across Eclipse networks



- Intelligent fault monitoring using browsers with correlation and filtering, digital scoreboards with dynamic rendering, and flexible event notifications
- Smartphone and tablet client application enabling out-of-NOC fault detection, isolation and handover to field staff

## INTELLIGENT NETWORK PROVISIONING

ProVision's automated provisioning processes reduce human error and save substantially on effort, time and OPEX. Intelligent provisioning involves:



- Automated discovery of network and service resources, including end-to-end TDM and Ethernet services and network configurations
- End-to-end provisioning of TDM and Ethernet services through an intuitive graphical user interface
- Automatic and on-demand validation testing of end-to-end services and network design
- Bulk provisioning of device firmware and license upgrades

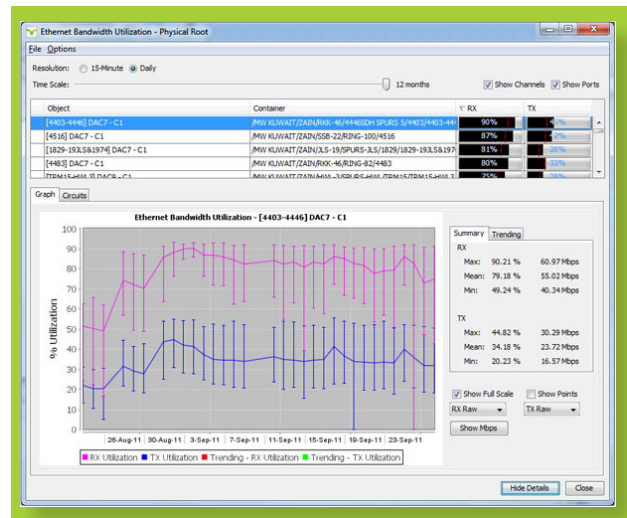
## PROACTIVE NETWORK BANDWIDTH MANAGEMENT

To get the most data capacity out of networks, and to identify spare capacity, ProVision includes network bandwidth reporting. These capabilities support capacity planning, license management and congestion problem-solving with:

- Ethernet Bandwidth Utilization instantly shows over- or under-utilization across all network ports, predicts future utilization, and provides navigation to deep-dive analysis tools
- RF Capacity Reports display the allocated, licensed, maximum & spare capacity available across all microwave interfaces in the network

## SECURE, RELIABLE & TRUSTED ACCESS CONTROL

- Role-based access control with Single-Sign-On
- Flexible containment-based management providing access control by region, technology, etc.
- Secure device access including SNMPv3, HTTPS and SSH
- RADIUS-based authentication, authorization and user access accounting
- Secure bulk provisioning of device security attributes including user accounts and Access Control Lists
- Audit logging, reporting and client session management



## OSS AND DEVICE INTEGRATION READY

Operation Support Systems (OSS) manage networks and services on multiple levels. ProVision provides coherent management for your OSS platforms, significantly reducing system integration CAPEX:

- Proven OSS integration with many network providers and OSS vendors, spanning microwave, TDM and Ethernet resources.
- Easy to integrate traditional SNMP/XML/CSV based NBI provides events, performance, configuration/inventory, and network topology.
- TMF 854 MTOSI industry standard interface (for integration of EMS/NMS and OSS systems) provides for automation of OSS processes associated with the assurance and provisioning of the microwave, TDM and Ethernet network resources.

## DATASHEET

### PROVISION® ELEMENT MANAGEMENT SYSTEM

#### SCALABLE SOLUTIONS

- Up to 10,000 Network Elements and 150 concurrent user sessions per server
- Licensing based on network size and feature set
- Redundant server options available

#### PLATFORM OPTIONS

- Windows Server – XP, 7, 2003, 2008
- UNIX Server – Solaris 10
- Windows Client - XP, 7, Vista, 2003, 2008
- Minimum Hardware Requirements – 2 GHz processor, 4 GB RAM, 100 GB hard drive
- Internationalization available on request

#### AVIAT NETWORKS SERVICES AND SUPPORT OPTIONS

- On-site training and installation services
- Custom software development
- 24/7 or 9/5 technical helpdesk available by email and telephone
- General Availability releases to AviatCare customers twice per year
- Expert network auditing available

---

[WWW.AVIATNETWORKS.COM](http://WWW.AVIATNETWORKS.COM)

Aviat, Aviat Networks, and Aviat logo are trademarks or registered trademarks of Aviat Networks, Inc.  
Eclipse and ProVision are trademarks or registered trademarks of Aviat Networks, Inc.  
© Aviat Networks, Inc. (2011 - 2014) All Rights Reserved. Data subject to change without notice. \_d\_PV\_UNIV\_16Jan14

